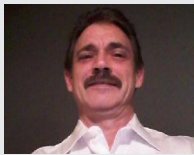
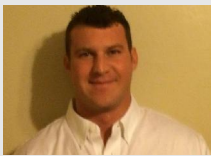




MEET WEBB



Jim LeClaire
Account Executive - Fleet
(817) 602-7390
jleclaire@webbwheel.com



Jake Young
Account Executive - Fleet
(208) 407-5702
jyoung@webbwheel.com



Jim Rosema
Account Executive - OEM
(616) 401-8643
jrosema@webbwheel.com



PJ Caplan
National OEM Sales Manager
(706) 294-9794
pcaplan@webbwheel.com

Guidelines for Brake Drum Replacement

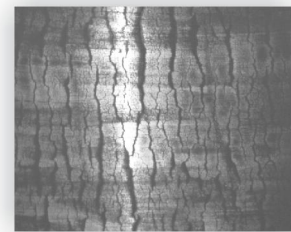
Brake drums need to be replaced when the **brake surface diameter exceeds the maximum diameter** cast or stamped on the drum. Brake drums should always be replaced in pairs to achieve the same brake power. Brake drum replacement is also required if any of the following conditions exist:

The brake drum is cracked



The brake surface has heavy heat check

- Heat check in excess of 3" in length
- High frequency of propagated heat check
- Crevices appear in brake surface cracks



The brake drum is known to have been severely overheated

- Hot-spotting is typically caused by brake drag or torque.
- These dark colored spots are the result of martensite forming in the cast iron braking surface



Brake drums should also be replaced if the following conditions occur:

- **The backing plate is cracked**
- **The bolt holes are elongated**
- **The brake drum is out of round**
- **The brake surface is grooved or worn beyond the maximum diameter**

For additional information on proper brake drum installation and replacement, visit http://webbwheel.com/aftermarket/training_toolbox.html



WEBB WHEEL OEM BUSINESS UNIT WINS FIRST GREAT DANE SUPPLIER OF THE YEAR AWARD

- Press Release